

Content available at: <https://www.ipinnovative.com/open-access-journals>

IP Archives of Cytology and Histopathology Research

Journal homepage: <https://www.achr.co.in/>

## Original Research Article

## Study of histopathological spectrum of ovarian lesions

Riddhi A Parmar<sup>1</sup>, Jaimin M Patel<sup>1</sup>, Bhawana S Sharma<sup>1</sup>, Bimal Patel<sup>1</sup>, Navin Patel<sup>1</sup>,  
Keval A Patel<sup>1,\*</sup><sup>1</sup>Dept. of Pathology, Gujarat Adani Institute of Medical Sciences, Bhuj, Kachchh, India

## ARTICLE INFO

## Article history:

Received 25-10-2021

Accepted 28-10-2021

Available online 02-12-2021

## Keywords:

Nonneoplastic

Neoplastic

Ovarian Lesions

Tumour

## ABSTRACT

**Background:** Ovarian pathology ranges from innocuous non-neoplastic lesions to malignant neoplastic entities. The incidence, clinical appearance and the behaviour of the different types of ovarian tumour is extremely variable. In order to have a better understanding of frequency and histomorphological patterns of different ovarian lesions study was encountered in our tertiary care hospital.

**Aims & Objectives:** To study the histopathology of ovarian non-neoplastic and neoplastic lesions and to study the distribution of ovarian lesions with respect to various parameters like age, bilaterality, gross and microscopic features.

**Methods and Materials:** This is a prospective study of 125 ovarian specimens received in department of pathology, G.K. General Hospital, Bhuj during August 1, 2018 to July 31, 2020.

**Results:** Total 125 cases of ovarian specimens were studied, amongst them 58 were non-neoplastic and remaining 67 were neoplastic. The most common non-neoplastic lesion seen was follicular cysts 12 cases (21%), followed by endometriosis 9 cases (16%). Among 67 neoplastic ovarian lesions 58(87%) cases were benign, 3(4%) cases were borderline and 6 (9%) cases were malignant. In benign ovarian neoplasm, most commonly seen lesions were serous cystadenoma 24 cases (36%) followed by 13 cases (20%) of mature cystic teratoma. In malignant cases, maximum was of high-grade serous cystadenocarcinoma.

**Conclusions:** Ovarian epithelial tumours are the most common type, while serous cystadenocarcinoma was the most common malignancy. Histological examination is gold standard and in certain difficult cases require immunohistochemistry.

**Key Messages:** Ovary is an important reproductive organ with involvement in production of progeny. Ovarian pathology ranges from innocuous non-neoplastic lesions to malignant neoplastic entities. Ovarian neoplasms have become increasingly important not only because of the wide range of neoplasms, but also because they have gradually increased the mortality rate. The incidence, clinical appearance and the behaviour of the different types of ovarian tumour is extremely variable.

This is an Open Access (OA) journal, and articles are distributed under the terms of the [Creative Commons Attribution-NonCommercial-ShareAlike 4.0 License](https://creativecommons.org/licenses/by-nc-sa/4.0/), which allows others to remix, tweak, and build upon the work non-commercially, as long as appropriate credit is given and the new creations are licensed under the identical terms.

For reprints contact: [reprint@ipinnovative.com](mailto:reprint@ipinnovative.com)

## 1. Introduction

Ovary is an important reproductive organ with involvement in production of progeny. Ovarian lesions include wide spectrum of complex neoplasms with a variety of histopathological patterns arising from epithelial tissues,

connective tissues, specialized hormone secreting germinal and embryonal cells.<sup>1</sup> Ovarian cancer accounts for about 3% of all cancers in women. Ovarian tumours represent about 27% of all female genital cancers and accounts for 52% of deaths caused by female genital cancers.<sup>2</sup> Indian Cancer Registry data project ovary as an important site of cancer in women, comprising up to 8.7% of cancers in different parts of the country.<sup>3</sup> Ovary is subjected to

\* Corresponding author.

E-mail address: [kevalapatel92@gmail.com](mailto:kevalapatel92@gmail.com) (K. A. Patel).

monthly endocrine and traumatic insults during normal ovulatory cycles. The most commonly cited mechanism for ovarian cancer is the incessant ovulation hypothesis which proposes that ovulation traumatizes the ovarian surface epithelium and thus stimulates proliferation, creating a milieu that predisposes to malignant transformation.<sup>4</sup> This may explain the apparent protective effects of oral contraceptives, late menarche, early menopause, multiparity, and breast feeding. Each of these factors decrease the occurrence of ovulation.<sup>5</sup> Ovarian tumours are insidious in onset and usually diagnosed at a late stage.<sup>6</sup> Patients with ovarian cancer commonly present with abdominal pain, a lump or menstrual abnormality.<sup>7</sup> Benign lesions occur at any age, but more common in reproductive age group. But malignant lesions come towards menopausal 50 - 60 years' age group. Epithelial tumours comprise about 60% of all ovarian neoplasms and more than 90% of malignant tumours.<sup>8</sup>

Both ovarian neoplastic and non-neoplastic lesions possess a great challenge to gynecological oncologist. Some non-neoplastic lesions of the ovary usually present as a pelvic mass and mimic an ovarian neoplasm. Therefore, their proper recognition and classification is important to allow appropriate therapy. Prognosis of the tumours can also be predicted from the degree of differentiation of the tumours.

## 2. Materials and Methods

The present study is conducted in the department of pathology, G K General Hospital, Gujarat Adani Institute of Medical Sciences, Bhuj during August 1, 2018 to July 31, 2020. This is a prospective study wherein examination of ovarian lesions was carried out. The consecutive oophorectomy specimens were received in 10% formalin from the department of Obstetrics and Gynecology with requisition form having relevant clinical features, age, radiological findings, and provisional diagnosis. At the time of receiving weighing of the ovarian specimen was obtained. Gross photographs of external surface and cut surface of the resected ovarian specimen were taken. The tissue sections were processed for paraffin embedding, 3-5-micron thick tissue sections were obtained and stained with Haematoxylin and Eosin (H&E) stain, and special stains such as Periodic acid Schiff (PAS) were used as and when required. Immunohistochemistry (IHC) study was done as and when required.

The non-neoplastic and neoplastic lesions from representative sections were studied and classified according to World Health Organisation (WHO) classification 2014.

## 3. Results

A total of 125 specimens of resected ovaries from 120 patients were studied. Five patient's had different pathologies in both ovaries. 58 cases were non-neoplastic and remaining 67 cases were neoplastic. The age distribution with percentage of 120 patients the mean age of the patient was 36 years. The youngest patient was 8 years old, while the oldest patient was 66 years old. Most of the benign tumour were observed in the age group of 20-40 years, while most of the malignant tumour cases were common in elderly (>40 years) age group.

In present study most of the patients presented with abdominal pain followed by menstrual irregularities. Ascites and urinary complaints were least common presenting complaints. [Table 1].

The most common non-neoplastic lesion found was follicular cysts 12 cases (21%), followed by endometriosis 9 cases (16%) [Table 2]. A rare case of unilateral xanthogranulomatous salpingo-oophoritis, which presented as tuboovarian mass (Figure 1).

Among the 67 neoplastic ovarian lesions 58(87%) cases were benign, 3(4%) cases were at borderline and 6 (9%) cases were malignant [Table 3]. In which 3 patients had bilateral ovarian tumours, while majority were unilateral.

In 58 benign ovarian neoplasms, most common seen lesion was serous cystadenoma 24 cases (36%) followed by benign cystic teratoma 13 cases (19%) and 11 cases (16.5%) of mucinous cystadenoma. Among the germ cell tumour, mature cystic teratoma was the most common followed by immature cystic teratoma. Whereas in sex cord stromal tumours two cases each of fibroma (Figure 2) and adult granulosa cell tumour (Figure 3). Out of total 6 malignant cases, maximum 5 cases were of high-grade serous cystadenocarcinoma (Figure 4) followed by one case of metastatic tumour. A case of bilateral metastatic ovarian neoplasm was seen in 20 year old female having Krukenberg tumour metastasize from gastric adenocarcinoma (Figure 5). The commonest gross morphology was the cystic in nature contributing to 79 %. The tumours presenting with cystic morphology were non-neoplastic and benign in nature especially of surface epithelial category. All three cases of borderline tumours were cystic and solid in morphology. Among tumours with solid or complex morphology, majority were malignant.

**Table 1:** Mode of presentation

S.No.	Symptoms	No. of Patients (%)
1.	Abdominal pain	81 (67 %)
2.	Menstrual irregularities	34 (28 %)
3.	Mass per abdomen	03 (3 %)
4.	Ascites	01 (1 %)
5.	Urinary complaints	01 (1 %)

**Table 2:** Histopathological subtype of non-neoplastic ovarian lesions (n= 58)

S.No.	Diagnosis	Unilateral	Bilateral	Total (%)
1.	Follicular cyst	9	3	12 (21%)
2.	Endometriosis	6	3	9 (16%)
3.	Benign epithelial cyst	3		3 (5%)
4.	Corpus luteal cyst	5		5 (9%)
5.	Benign simple cyst	5		5 (9%)
6.	Hemorrhagic corpus luteal cyst	6		6 (11%)
7.	Hemorrhagic follicular cyst	7		7 (12%)
8.	Hemorrhagic serous cyst	1	1	2 (3%)
9.	Simple serous cyst	2		2 (3%)
10.	Ovarian torsion	3		3 (5%)
11.	Granulomatous inflammation		1	1 (1.5%)
12.	Xanthogranulomatous Inflammation	1		1 (1.5%)
13.	Mixed (Corpus luteal + Follicular cyst)	2		2 (3%)

**Table 3:** Histopathological subtype of neoplastic ovarian lesions (n=67)

S.No.	Diagnosis	Unilateral	Bilateral	Total (%)
1.	Serous Cystadenoma	23	1	24 (36%)
2.	Borderline Serous Cystadenoma	1		1 (1.5%)
3.	High Grade Serous Cystadenocarcinoma	3	1	4 (6%)
4.	Mucinous Cystadenoma	11		11 (16.5%)
5.	Borderline Mucinous Tumour	2		2 (3%)
6.	Brenner's Tumour	1		1 (1.5%)
7.	Mixed Epithelial Tumour, (high grade serous and borderline mucinous)	1		1 (1.5%)
8.	Mature Cystic Teratoma	13		13 (19%)
9.	Immature Cystic Teratoma	1		1 (1.5%)
10.	Mixed (Serous Cystadenoma + Brenner's Tumour)	1		1 (1.5%)
11.	Mixed (Serous cystadenoma + Mature Cystic Teratoma)	1		1 (1.5%)
12.	Mixed (Mucinous cystadenoma + Mature Cystic Teratoma)	1		1 (1.5%)
13.	Fibroma	2		2 (3%)
14.	Granulosa Cell Tumour	2		2 (3%)
15.	Low grade endometriotic stromal sarcoma	1		1 (1.5%)
16.	Metastatic		1	1 (1.5%)

**Table 4:** Comparison of benign / borderline / malignant ovarian tumour in different studies

S.No.	Nature of Tumour	Present study	Jha R et al. <sup>9</sup>	Kayastha et al. <sup>10</sup>	Yasmin S et al. <sup>11</sup>	Pilli et al. <sup>12</sup>	Shaikh et al. <sup>13</sup>
1.	Benign	84 %	83.9%	90.5%	89.71%	75%	68.25%
2.	Borderline	4 %	-	-	-	3%	0.72%
3.	Malignant	12 %	16.1%	9.5%	10.29%	22%	30.96%

**Table 5:** Comparison of distribution of neoplastic lesions in different studies

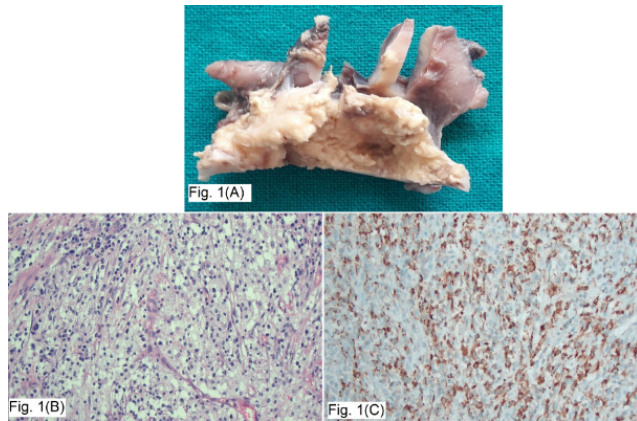
Histopathological Type	Present study	Pilliet al. <sup>12</sup>	Makwana et al. <sup>14</sup>	Kanthikar et al. <sup>15</sup>	Sawant et al. <sup>16</sup>	Shaikh et al. <sup>13</sup>	Karet al. <sup>17</sup>	Kayastha et al. <sup>10</sup>
Surface Epithelial Tumours	69 %	70.9 %	65.71%	67.14 %	84.8 %	81.0%	79%	72.6%
Germ Cell Tumours	21 %	21.2 %	22.86 %	22.85 %	9.1 %	10.95%	16%	25.3%
Sex Cord Stromal Tumours	7 %	6.7 %	9.29 %	5.71 %	6.1 %	5.03%	1.5%	2.10%
Metastatic Tumours	3 %	0.7 %	2.14 %	4.28 %	-	1.58%	3.5%	-

**Table 6:** Comparison of distribution of ovarian Tumour in different studies (n=70)

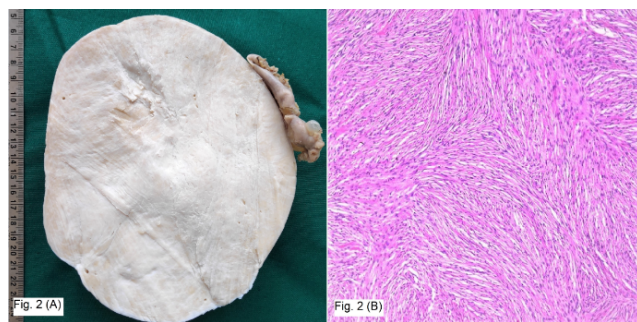
S. No.	Type of Tumour	Present Study	Shaikh et al. <sup>13</sup>	Jha R et al. <sup>9</sup>	Kanthikar et al. <sup>15</sup>
1.	Serous Cystadenoma	36 %	42.07 %	27.33%	40 %
2.	Serous Cystadenofibroma	-	-	0.62%	-
3.	Borderline Serous Tumour	1.5 %	-	-	1.42 %
4.	Serous Cystadenocarcinoma	6.5 %	8.78%	7.45%	8.57 %
5.	Mucinous Cystadenoma	16.5 %	16.85%	13.04%	11.5 %
6.	Borderline Mucinous Tumour	3 %	-	-	-
7.	Mucinous Cystadenocarcinoma	-	12.11%	3.73%	4.28 %
8.	Brenner's Tumour	1.5 %	-	-	-
9.	Mixed epithelial Tumour	1.5 %	-	-	-
10.	Mature Cystic Teratoma	19 %	7.2%	40.37%	18.57 %
11.	Immature Cystic Teratoma	1.5 %	-	-	-
12.	Dysgerminoma	-	2.73 %	-	2.85 %
13.	Mixed (Epithelial & Germ cell)	3 %	2.73%	-	-
14.	Fibroma	3 %	1.29%	0.62 %	4.28 %
15.	Thecoma	-	0.41%	1.86 %	-
16.	Fibrothecoma	-	-	-	-
17.	Granulosa Cell Tumour	3 %	3.6%	0.62 %	1.42 %
18.	Low grade endometrial stromal sarcoma	1.5 %	-	-	-
19.	Metastatic	3 %	1.58%	1.24 %	4.28 %

**Table 7:** Comparison of gross features in neoplastic lesions

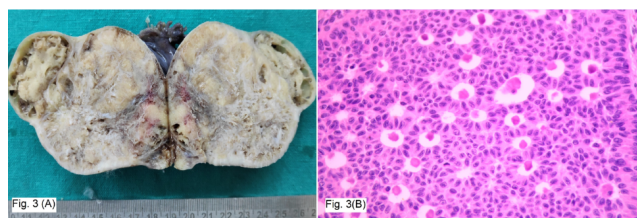
Author Ref.	Benign (%)			Borderline (%)			Malignant (%)		
	Cystic	Solid	Partly cystic and solid	Cystic	Solid	Partly cystic and solid	Cystic	Solid	Partly cystic and solid
Kanthikar et al. <sup>15</sup>	66.67	13.3	28.88	-	-	-	-	42.85	55.0
Gupta N et al. <sup>18</sup>	76.2	2.4	21.5	-	-	-	6.7	49.2	44.1
Madan et al. <sup>19</sup>	87.22	2.33	10.45	-	-	-	-	52.94	41.38
Misra et al. <sup>20</sup>	95.4	1.08	3.51	-	-	-	10.63	15.95	73.40
Prabhakar et al. <sup>21</sup>	88.5	7.45	4.2	60	-	40	0.94	18.9	71.14
Present study	78	3.5	18.5	-	-	100	0	25	75



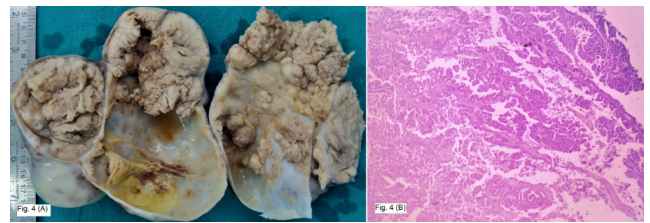
**Fig. 1:** **A:** Cut section of tubo-ovarian mass shows yellowish necrotic appearance and attached fallopian tube; **B:** Histology shows diffuse proliferation of foamy histiocytes and inflammatory cells. (H&E x400); **C:** Shows CD 68 cytoplasmic positivity in foamy macrophages (IHC).



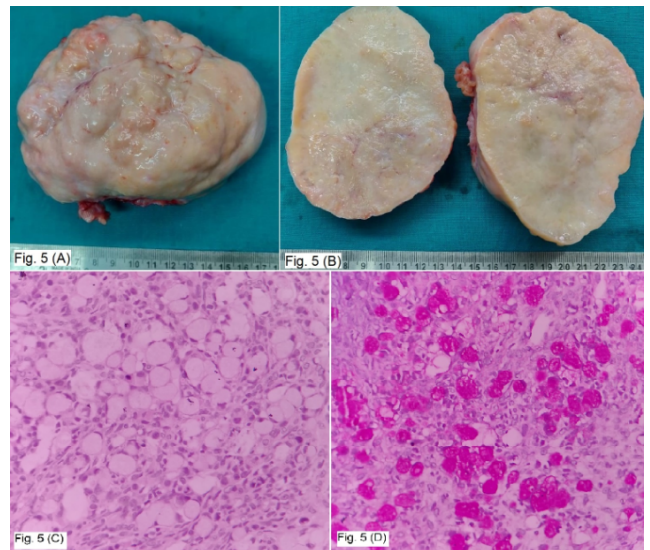
**Fig. 2:** **A:** Shows enlarged, well-circumscribed solid white mass of ovarian fibroma; **B:** Shows spindle cells arranged in a fascicles and whorled pattern, nuclei are bland, wavy and fusiform with eosinophilic cytoplasm in a case of ovarian fibroma. (H & E x100)



**Fig. 3:** **A:** Shows whitish yellowish solid and cystic areas in a case of granulosa cell tumour; **b:** Shows granulosa cells in microfollicular pattern and numerous Call-Exner bodies. (H & E x400)



**Fig. 4:** **A:** Shows multiloculated cysts having papillary excrescences and solid areas in a case of serous cystadenocarcinoma; **B:** Shows serous cystadenocarcinoma having stratified columnar epithelium in complex papillary architecture and cribriform pattern. (H & E x100)



**Fig. 5:** **A:** Shows enlarged with a well-circumscribed, solid and bosselated contour in a case of Krukenberg tumour; **B:** Cut section of Krukenberg tumour shows predominantly creamish solid tumour with mucinous appearance; **C:** shows sheets of signet ring cells with eosinophilic granular cytoplasm and peripherally pushed nucleus with mucin vacuoles in a case of Krukenberg tumour. (H & E x400), **(D)** Shows intense and diffuse cytoplasmic positivity in signet ring cells. (PAS x400)

#### 4. Discussion

Ovarian cancer is the second leading cause of mortality among all gynecological cancers. Due to similar clinical presentations, there is confusion in the diagnosis of non-neoplastic and neoplastic lesions of ovary although it is diagnosed as a mass or cystic lesion on ultrasonography and hence removed prophylactically in routine oophorectomies and hysterectomies.

Age range of our patients was from 8 years to 66 years with mean age of 36 years. The most common affected age group was 30-39 years and 40-49 years is concordance with study done by Amin et al.<sup>22</sup>

The most common complain in the present study was pain in the abdomen in 81 patients (67%) followed by

menstrual irregularities including post-menopausal bleeding in 34 (28%), mass per abdomen in 03 (3%). Ascites and urinary complaints were seen in 1 (1%) patient each. Pain in abdomen commonest were seen in study of Yasmin S et al.<sup>11</sup> 48 patients (70.59%), 31 (41.33 %) in Kanthikar SN et al.<sup>15</sup> and 12 (40 %) in study of Gupta A et al.<sup>18</sup> Menstrual irregularities found in 3 patients (4.41 %) in Yasmin S et al.,<sup>11</sup> 27 (36 %) in Kanthikar SN et al.<sup>15</sup> and 10 (33.33 %) in study of Gupta A et al.<sup>18</sup> Mass per abdomen found in 10 patients (14.71 %) in Yasmin S et al.<sup>11</sup> 6 (8 %) in Kanthikar SN et al.<sup>15</sup> and 4 (13.33 %) in study of Gupta A et al.<sup>18</sup> The results of our study comply well with a study carried out by Yasmin S et al.<sup>11</sup>

Kreuzer GF et al.<sup>23</sup> reported 82 (40.39%) non-neoplastic lesions out of 203 ovarian lesions and Martinez-Onsurbe P et al.<sup>24</sup> reported 55 (41.67%) non-neoplastic lesions out of 132 ovarian lesions. Incidence reported in our study regarding non-neoplastic lesions was similar and concurring with the above studies.

The non-neoplastic lesions like follicular cysts 12 cases (21%) are the commonly encountered conditions in present study. Incidence of these cysts were accordance with to Kreuzer GF et al.<sup>23</sup> (55% Follicular cyst) and Martinez-Onsurbe P et al.<sup>24</sup> (55% follicular cyst). Gupta N et al.<sup>18</sup> reported follicular cyst (80.2%). In the present study the incidence was 21%, which was lower than this study. Endometriosis is common condition found in women of reproductive age. In our study nine cases (16%) were reported. These findings were very high as compared to (2.9%) study done by Gupta N et al.<sup>18</sup> Al Fozen H and Tulandi T<sup>25</sup> in a study conducted for 6 year reported 340 lesions out of which 155 (45.59%) were ovarian endometriosis.

In the present study, out of 67 neoplastic cases most common lesions were benign followed by, malignant tumour and borderline malignancy. These findings were similar to studies done by Jha R et al.<sup>9</sup> Kayastha et al.<sup>10</sup> and Yasmin S et al.<sup>11</sup> Other studies recorded lower incidence of benign tumours.<sup>12,13</sup> [Table-4].

Ovarian tumour may occur at any age, including infancy and childhood. Incidence rate, however increase with age, with the greatest number of cases being diagnosed beyond 4th and 5th decade. In our study, the youngest patient was of 8 year and oldest of 66 year, which was concordance with Kanthikar SN et al.<sup>15</sup>

Based on histomorphological features, incidence of surface epithelial tumours was commonest (69%) followed by germ cell tumours (21%), sex cord (7%) and metastatic (3%). In this study, WHO classification of Tumours of Female Reproductive Organs 2014 (4<sup>th</sup> Edition) was implemented to classify the tumours. Surface epithelial tumours constituted the most common category in the present study contributing 69 % of all tumours followed by germ cell tumours, sex cord stromal tumours and metastatic

tumours in decreasing order of frequency as seen in other studies from India and other countries. These findings correlated with study by Pilli et al.,<sup>12</sup> Kanthikar et al.<sup>15</sup> and Makwana et al.<sup>14</sup> [Table-5]

Benign serous cystadenoma was the commonest tumour type with 36 % of lesions. This was followed by benign mucinous cystadenoma having incidence of 16.5 %. Similar results were reported by Yasmin S et al.,<sup>11</sup> Kanthikar et al.,<sup>15</sup> Sawant et al.<sup>16</sup> Shaikh et al.<sup>13</sup> Among malignant tumours, serous cystadenocarcinoma was the most common. However, all four-study described in table showed higher incidence of serous malignancy. In borderline surface epithelial tumour category one case of borderline serous and two cases of borderline mucinous tumour were noted. Benign mature cystic teratoma was the most common germ cell tumour 13 cases (19 %) and 1 case was immature cystic teratoma which was similar to findings reported by Kanthikar SN et al.<sup>15</sup> Whereas in category of sex cord stromal tumours two cases (3%) each of fibroma and granulosa cell tumour were reported, similar findings was reported by Kanthikar SN et al.<sup>18</sup> A single case of bilateral metastatic Krukenberg tumour was seen in present study which was similar findings to study of Shaikh et al.<sup>13</sup> (1.58 %) and Jha R et al.<sup>9</sup> (1.24 %). [Table-6]

There is inverse relation between ovarian cancer risk and parity. Parous women are at significantly lower risk than nulliparous women. In our study, incidence in nulliparity (15%) is comparable with Misra et al.<sup>20</sup> (16.00%) and Madan et al.<sup>19</sup> (14.54%).

In our study, 95.5% tumours were unilateral and 4.5% tumours were bilateral. The incidence of laterality was in concordance with Bhuvanesh et al.<sup>26</sup> (25.75%), while Madan et al.<sup>19</sup> and Verma et al.<sup>27</sup> reported a low incidence of 11% and 11.91% respectively. We found incidence of unilateral tumour comparatively higher than these studies.

Grossly, it was found that in our study benign tumours were cystic as compared to malignant, which were solid in consistency followed by partly cystic and partly solid which is similar to other studies where benign tumour were mostly cystic and malignant tumour predominantly showed solid and cystic or variegated appearance. [Table-7]

## 5. Conclusion

The ovarian lesions manifest a complex wide spectrum. Ovarian tumour categorizing according to the WHO classification help in early and accurate diagnosis as well as prognosis of ovarian tumour. Histopathological study is gold standard and in certain cases required immunohistochemistry to diagnosis and also to predict the prognosis.

## 6. Conflicts of Interest

The authors declare that there are no conflicts of interest regarding the publication of this paper.

## 7. Source of Funding

None.

## References

- Pradhan A, Sinha AK, Upreti D. Histopathological patterns of ovarian tumors at BPKIHS. *Health Renaissance*. 2012;10(2):87–97.
- Jemal A, Siegel R, Ward E, Hao Y, Xu J, Thun MJ, et al. Cancer statistics. *CA Cancer J Clin*. 2009;59:225–49.
- Murthy NS, Shalini S, Suman G, Pruthivish S, Mathew A. Changing trends in incidence of ovarian cancer - the Indian scenario. *Asian Pac J Cancer Prev*. 2009;10(6):1025–30.
- Seidman JD, Ronnett BM, Shih LM, Cho KR, Kurman RJ. Epithelial Tumors of the Ovary. In: Kurman R, Ellenson L, Ronnett B, editors. *Blaustein's Pathology of the Female Genital Tract, 7th Edn.* vol. 2019. Switzerland AG: Springer Nature; p. 841–966.
- Cramer DW, Welch WR. Determinants of ovarian cancer risk. II. Inferences regarding pathogenesis. *J Natl Cancer Inst*. 1983;71(4):717–21.
- Tariq S, Sohail R. Study of ovarian tumors in young girls. *Professional Med J*. 2011;18(1):41–5. doi:10.29309/TPMJ/2011.18.01.1856.
- Shahin R, Ghulam S, Abid A. A clinic - pathological study of ovarian cancer. *Mother and Child*. 1998;36:117–25.
- Zaloudek CJ, Garg K. Tumors of the Female Genital Tract. In: Fletcher C, editor. *Diagnostic histopathology of tumors, 4th Edn.* vol. 2013. Philadelphia: Elsevier; p. 669–772.
- Jha R, Karki S. Histological pattern of ovarian tumors and their age distribution. *Nepal Med Coll J*. 2008;10(2):81–5.
- Kayastha S. Study of ovarian tumours in Nepal Medical College Teaching Hospital. *Nepal Med Coll J*. 2009;11(3):200–2.
- Yasmin S, Asif YA, M. Clinico-histological pattern of ovarian tumours in Peshawar region. *J Ayub Med Coll Abbottabad*. 2008;20(4):11–13.
- Pilli GS, Suneeta KP, Dhaded AV, Yenni VV. Ovarian tumours: a study of 282 cases. *J Indian Med Assoc*. 2002;100(7):420–47.
- Shaikh NA, Hashmi F, Samoo RP. Pattern of ovarian tumors: Report of 15 years experience at Liaquat University Jamshoro. *JLUMHS*. 2007;6(1):13–5.
- Makwana HH, Maru AM, Lakum NR, Agnihotri AS, Trivedi NJ, Joshi J, et al. The relative frequency and histopathological pattern of ovarian masses-11 year study at tertiary care centre. *Int J Med Sci Public Health*. 2014;3(1):81–4.
- Kanthikar SN, Dravid NV, Deore PN, Nikumbh DB, Suryawanshi KH. Clinico-histopathological analysis of neoplastic and non-neoplastic lesions of the ovary: a 3-year prospective study in dhule, north maharashtra, India. *J Clin Diagn Res*. 2014;8(8):FC04–7. doi:10.7860/JCDR/2014/8911.4709.
- Sawant A, Mahajan S. Histopathological study of ovarian lesions at a tertiary health care institute. *MVP J Med Sci*. 2017;4(1):26–9.
- Kar T, Kar A, Mohapatra PC. Intraoperative cytology of ovarian tumours. *J Obstet Gynecol India*. 2005;55(4):345–9.
- Gupta N, Bisht D, Agarwal AK, Sharma VK. Retrospective and prospective study of ovarian tumours and tumour-like lesions. *Indian J Pathol Microbiol*. 2007;50(3):17883123–17883123.
- Madan A, Tyagi SP, Mohsin S. Incidence of ovarian tumours at Aligarh with particular reference to histopathological typing. *J Obstet Gynecol India*. 1978;p. 827–32.
- Misra RK, Sharma SP, Gupta U, Gaur R, Mishra SD. Pattern of ovarian neoplasm in eastern UP. *J Obstet Gynecol India*. 1991;30:242–6.
- Prabhakar BR, Maingi K. Ovarian tumors - prevalence in Punjab. *Indian J Pathol Microbiol*. 1989;32(4):276–81.
- Amin SM, Olah F, Babandi RM, Liman MI, Abubakar SJ. Histopathological analysis and clinical correlations of ovarian lesions in a tertiary hospital in Nigeria: A 10-year review. *Ann Trop Pathol*. 2017;8(1):25–8.
- Kreuzer GF, Parodowski T, Wurche KD, Flenker H. Neoplastic or Nonneoplastic ovarian cyst The Role of Cytology. *Acta Cytol*. 1995;39(5):882–6.
- Martinez-Onsurbe P, Villaespesa AP, Anquela J. Aspiration cytology of 147 adnexal cysts with histologic correlation. *Acta Cytol*. 2001;45(6):941–7.
- Al-Fozan H, Tulandi T. Left lateral predisposition of endometriosis and endometrioma. *Obstet Gynecol*. 2003;101(1):164–6.
- Bhuvanesh U. Study of ovarian tumours. *J Obstet Gynaecol India*. 1978;28:271–7.
- Verma K, Bhatia A. Ovarian neoplasms- A study of 403 tumours. *J Obstet Gynaecol India*. 1981;p. 406–11.

## Author biography

**Riddhi A Parmar**, Former Resident

**Jaimin M Patel**, Resident

**Bhawana S Sharma**, Former Resident

**Bimal Patel**, Associate Professor

**Navin Patel**, Professor

**Keval A Patel**, Former Resident

**Cite this article:** Parmar RA, Patel JM, Sharma BS, Patel B, Patel N, Patel KA. Study of histopathological spectrum of ovarian lesions. *IP Arch Cytol Histopathology Res* 2021;6(4):230-236.